

MECHANICAL SLINGS As Per IS 5245 (Part II) 1971



TYPES OF SINGLE PART SLINGS

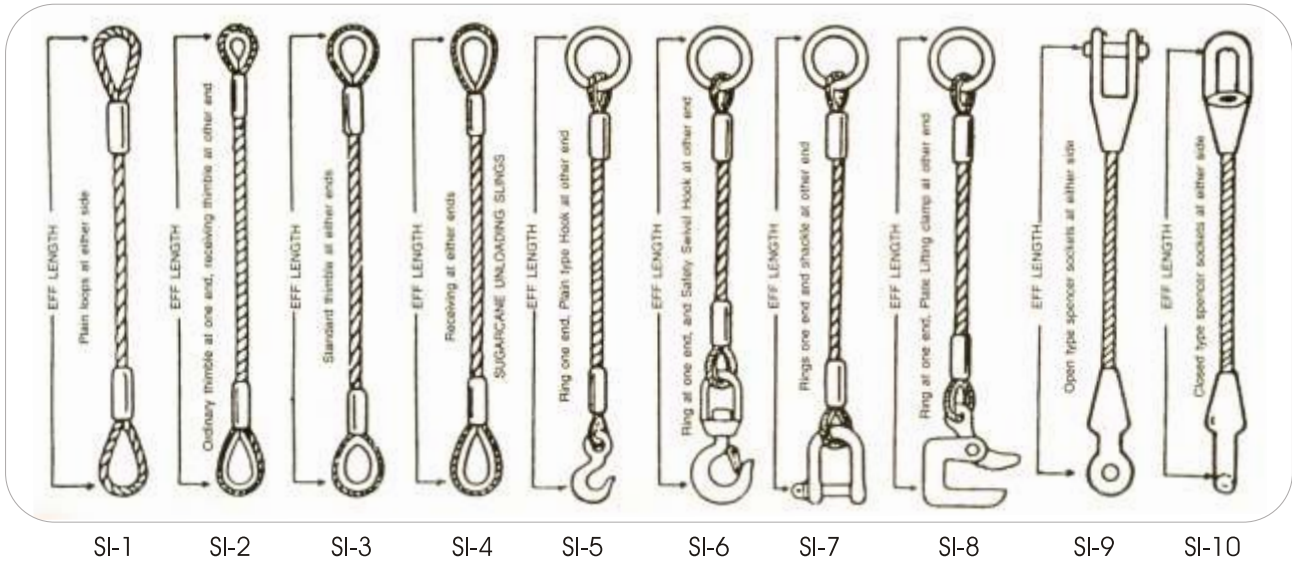


Table 1
 Max. safe working load in kg. for
 Single Part Slings

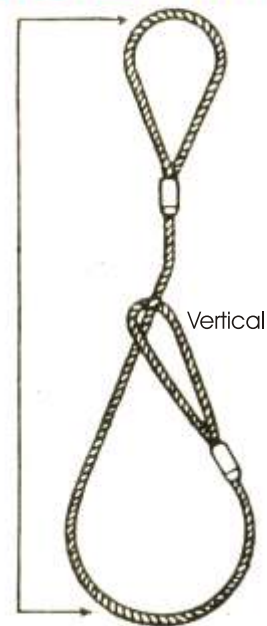
Min. Rope Size	Vertical	Basket	Choker
3	70	140	50
4	130	260	100
5	200	400	150
6	250	500	190
8	550	1100	410
9	670	1340	500
10	800	1600	600
11	1000	2000	750
12	1200	2400	900
13	1400	2800	1050
14	1750	3500	1300
15	2000	4000	1500
18	2500	5000	1875
19	3000	6000	2260
20	3300	6600	2475
22	4000	8000	3000
24	4600	9200	3450
25	5000	10000	3750
28	6500	13000	4875
32	8000	16000	6000
35	9200	18400	6900
36	10400	20800	7800
38	12000	24000	9000
40	12700	25400	9625
44	16700	33400	12625
48	20000	40000	15000
52	23000	46000	17250

BASKET HITCH



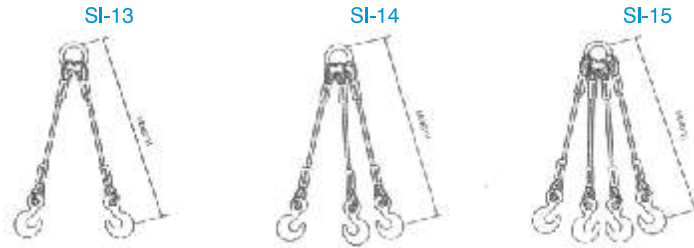
SI-11

CHOKER HITCH



SI-12

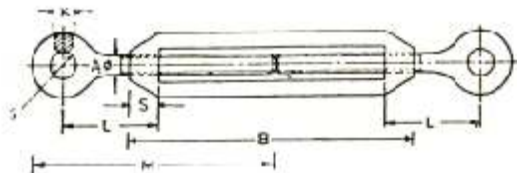
Note: THE CAPACITY INDICATED IN THE ABOVE TABLE, FOR BASKET HITCH AND CHOKER IS FOR GUIDANCE ONLY, VERTICAL COLUMN IS THE ACTUAL LOAD THE SLINGS CAN BE TESTED AND CERTIFIED IN OTHER WORDS SAFE WORKING LOAD IS APPLICABLE FOR VERTICAL FALL ONLY



MULTIPLE LEG SLINGS

Min. Rope Size in mm	Permissible Working Load of one leg Slings at 0°		Safe Working Loads for two legs Slings			
	(Kg)	at 0°	30°	60°	90°	120°
3	70	140	135	120	100	70
4	130	260	250	225	185	130
5	250	400	385	350	280	200
6	250	500	480	450	350	250
8	570	1100	1050	950	775	550
9	600	1340	1300	1150	950	670
10	800	1600	1550	1400	1100	800
11	1000	2000	1900	1750	1400	1000
12	1200	2400	2300	2100	1700	1200
13	1450	2800	2700	2400	2000	1400
14	1700	3500	3400	3000	2500	1700
15	2000	4000	3850	3450	2800	2000
18	2500	5000	4800	4300	3500	2500
19	3000	6000	5800	5200	4200	3000
20	3400	6600	6400	5760	4600	3300
22	4000	8000	7700	6900	5600	4000
24	4600	9200	8900	7900	6500	4600
25	5000	10000	9600	8600	7000	5000
28	6500	13000	12500	11200	9200	6500
32	8000	16000	15400	13800	11300	8000
35	9200	18400	17800	15900	13000	9200
36	10400	20800	20100	17800	14700	10400
38	12000	24000	23200	20800	16900	12000
40	12700	25400	24500	22000	17900	12700
44	16700	33400	32200	28900	23500	16700
45	20000	40000	38600	34600	28200	20000
52	23000	46000	44400	39600	32400	23000

TURN BUCKLES

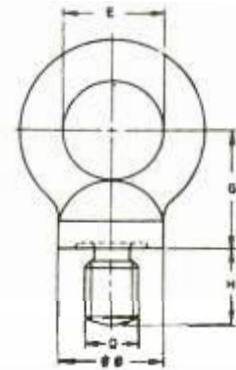


Assembly of Double Ended Type Stretching Screw



Section XX

EYE BOLT



Nominal Size	Proof Load kN	Safe Working Load kN
A		
M6	2.0	1.0
M8	3.0	1.5
M10	6.0	3.0
M12	9.0	4.5
M14	12.0	6.0
M16	15.2	7.6
M20	22.4	11.2
M22	32.4	16.2
M24	40.0	20.0
M30	63.0	31.5
M36	90.0	45.0
M45	142.0	71
M52	190.0	95

Thread Size D	Maximum Axial Lifting (Will SWL) capacity
(1)	(2)
M8	0.16
M10	0.25
M12	0.40
M16	0.63
M20	1
M24	1.6
M30	2.5
M36	4
M42	6.3
M48	8
M56	10
M64	16
M72x6	20
M80x6	25
M90x6	32
M100x6	40



SHALIN MATERIAL HANDLING PVT.LTD.

An ISO 9001 - 2000 Company

'Sevagiri Residency' Plot No. 49, Sector 18, Chhatrapati Shivaji Park, Pradhikaran, Chikhali Road, Chinchwad, Pune - 411019, M.S., India

Telefax : +91- 20-27491637/ 38 Mobile :- 93710 08857

Email : sales@shalinpl.com www.shalinmhpl.com

* All diamentions are aproximate * Eye Bolts in alloy steel can also be manufactured* Eye Bolts in BSW threadings are also available